

SOUTHERN QUEEN

Fireplace Grates
and Furnishings



Catalog No. 40

CHATTANOOGA IMPLEMENT & MANUFACTURING CO.
Chattanooga, Tennessee

Digitized by



ASSOCIATION
FOR
PRESERVATION
TECHNOLOGY,
INTERNATIONAL
www.apti.org

BUILDING
TECHNOLOGY
HERITAGE
LIBRARY

<https://archive.org/details/buildingtechnologyheritagelibrary>

From the collection of:

Mike Jackson, FAIA

SOUTHERN QUEEN

*Fireplace Grates
and Furnishings*



CHATTANOOGA IMPLEMENT & MANUFACTURING CO.
Chattanooga, Tennessee

CATALOG NO. 40—GRATE DEPARTMENT

Factory Where Southern Queen Fireplace Grates and Furnishings Are Made



CHATTANOOGA IMPLEMENT AND MANUFACTURING CO.

CHATTANOOGA, TENNESSEE, U. S. A.

E. H. SHOLAR, *President*

SOUTHERN QUEEN COMBINATION GRATES *and* FIREPLACE FURNISHINGS

SPECIAL pains have been taken to arrange this catalog so as to be of valuable service to the buyer of Combination Grates and Fireplace Furnishings, and we feel confident that, if you will familiarize yourself with its contents, you will be convinced that we have the superior assortment and that Southern Queen Fireplace Grates and Furnishings will meet your requirements for homes from the simplest to the most elaborate.

The Southern Queen Grate possesses an individuality in domestic and commercial circles which is without rival.

During the thirty years that Southern Queen Fireplace Grates and Furnishings have been on the market we have made an unceasing effort to manufacture the best fireplace grates and fixtures that first-class material and skilled labor, with the aid of the best factory facilities, could produce.

INDEX

	PAGE
ANDIRONS	8, 9, 10, 11, 12, 13, 14
ASH PIT DOORS	44
ASH TRAPS, Automatic	44
BASKETS, Combination Grates	37
" Adjustable Lug	37
" Portable	15, 16, 17, 18
" Club House	19
" Wood Ornamental	18
" Adjustable Club House	43
" Adjustable Hanging	43
CESS POOL RINGS	45
COBBLER SETS	45
DAMPERS, Chimney	44
DOG IRONS	44
FENDERS, Ornamental	18
FRAMES, Cast Iron	43
" Wrought Iron	42
GAS LOG REST	44
GRATES, Combination 16-Tile Full Cast Iron Summer Fronts	21, 22, 23
" Combination 17-Tile Full Cast Iron Summer Fronts	24, 25, 26
" Combination 16-Tile $\frac{3}{4}$ Cast Iron Summer Fronts	27, 28, 29
" Combination 17-Tile $\frac{3}{4}$ Cast Iron Summer Fronts	29, 30, 31, 32
" Combination 16-Tile Full Sheet Steel Summer Fronts	33, 34
" Combination 17-Tile Full Sheet Steel Summer Fronts	35
" Combination 16-Tile $\frac{3}{4}$ Sheet Steel Summer Fronts	36
" Combination 17-Tile $\frac{3}{4}$ Sheet Steel Summer Fronts	35, 36
" Common	39, 40
" Accessories, Common	41
HAMILTON GRATES	6, 7
HEATER, Sad Iron	45
IMPLEMENTS	46, 47
IRONS, Tailor	44
" Sad	44
" Pressing	44
" Charcoal	44
LASTS AND STANDS	45
LININGS, Iron Fire-Place	38
MANTEL SHIELDS	43

SPECIAL NOTES

SOUTHERN QUEEN Combination Grate Frames are furnished in two Standard sizes, 16 and 17-Tile.

The 16-Tile size measures 24 $\frac{1}{2}$ inches wide and 30 $\frac{1}{4}$ inches high, outside measurements.

The 17-Tile size measures 30 $\frac{1}{2}$ inches wide and 30 $\frac{1}{4}$ inches high, outside measurements.

The Standard size openings are 18 inches, 20 inches and 24 inches; however, No. 416 (page 33), No. 816 (page 22), No. 916 (page 33), have 16-inch openings.

Odd size fire-place openings can be fitted with Wrought Iron Frames, illustrated on page 44.

The crown or ash screen for grates with three-quarter summer fronts are finished in the same finish as the frame and summer front. However, when the summer front extends to the hearth the crown is always finished in black.

Our Plating Department has every late and improved equipment for finishing SOUTHERN QUEEN Fire-Place Grates and Furnishings in the best possible manner, which, together with our superior foundry facilities, is largely responsible for the goods shown herein being the most popular line of Fire-Place Furnishings on the market.

All Ornamental Grates shown in this catalog can be supplied in any style of brass, copper or nickle finishes, or black. In ordering always state what finish is wanted.

All goods are sold f. o. b. cars Chattanooga, or Boyce (our factory depot), Tennessee, and are shipped at buyer's risk. We will not be responsible for breakage or loss in transit.

TERMS: 60 days net, or 2% discount for cash in ten days.

Broken goods should not be returned as they are not worth the cost of return freight.

ABBREVIATIONS FOR FINISHES IN WHICH PLATED GOODS CAN BE SUPPLIED

W. I.—Wrought Iron or Black	F. G.—Flemish Gray
B. C.—Bright Copper	A. B.—Antique Brass
A. C.—Antique Copper	O. B.—Oxidized Brass
O. C.—Oxidized Copper	N. P.—Nickle Plated
B. B.—Bright Brass	O. N.—Oxidized Nickle
B. A. B.—Burnt Antique Brass	

When dull or brush brass finish is desired, abbreviations should not be used. We do not recommend these finishes.

When an order for an upright section of a frame described as "RIGHT" or "LEFT," we will understand that the "RIGHT" piece is the one at your right when facing the grate.

THE HAMILTON GRATE

The New Improved Portable or Set Grate



THE HAMILTON SET GRATE, shown on pages 6 and 7, is an improvement over all other Set Grates and has more desirable features than any Grate on the market.

Will burn either soft or hard coal or coke.

Made extra heavy for long service.

The double-draft dampers have balance weights, making them easy to operate, and they can be left open any width desired.

The Summer Front rests on the crown and covers the basket when in position. We were the originators of this type of grate front.

There is space between the basket and crown for ashes to pass to ash pit, assuring a clean hearth.

The crown has draft damper for controlling the fire. It is extra heavy and sets firmly on the hearth independent of the frame.

The Shaker Bottom is extra heavy and extends lengthwise across the firepot; easy to shake and easy to clean.

Unlike all other Set Grates, no special key is necessary for shaking or dumping the bottom. An ordinary poker is used for this purpose.

The Shaker Arm, which is so unsightly in other set grates, is concealed, and is reached by passing poker between basket and crown.

The Firepot is lined with best grade fire tile, which can be easily replaced by taking out the removable jamb plates. Hamilton Grates are new and original designs. They are triple plated and highly polished, or finished in wrought-iron black.

SPECIFICATIONS:

Outside width of back, over all: 24-inch grate, 25 inches. Outside width of back, over all: 20-inch grate, 21 inches.

Size of firepot: Front 24, back 19½, depth 10 inches. Size of Firepot: Front 20, back 14, depth 10 inches.

Outside depth of grate, over all: 14 inches.

SOUTHERN · QUEEN · FIREPLACE · GRATES · AND · FURNISHINGS



Front Construction View



No. 1211 — Open View



No. 1311 — 30½ inches wide; 24-inch Grate
Half Cast Iron Summer Front to Crown



Rear Construction View



No. 1211 — 24½ inches wide; 20-inch Grate
Cast Iron Summer Front to Crown



No. 1611 — 24½ inches wide; 20-inch Grate
Cast Iron Summer Front to Crown
No. 1621 — 30½ inches wide; 20-inch Grate
Cast Iron Summer Front to Crown

THE HAMILTON GRATE

SOUTHERN · QUEEN · FIREPLACE · GRATES · AND · FURNISHINGS



No. 1321 — Open View



No. 1511 — Open View



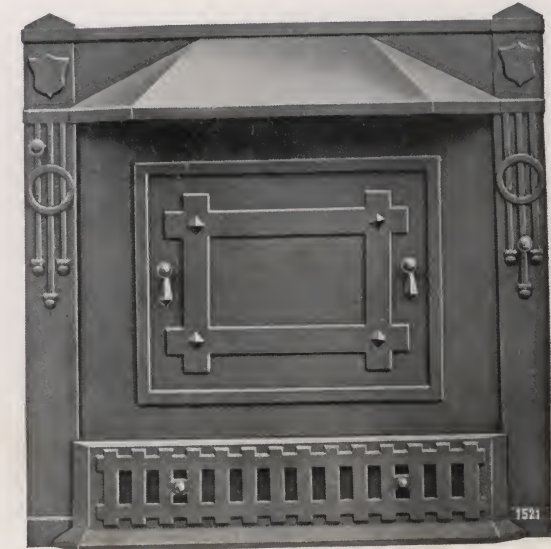
No. 1521 — Open View



No. 1321 — 30½ inches wide; 24-inch Grate
Half Cast Iron Summer Front to Crown



No. 1511 — 24½ inches wide; 20-inch Grate
Cast Iron Summer Front to Crown



No. 1521 — 30½ inches wide; 24-inch Grate
Cast Iron Summer Front to Crown

THE HAMILTON GRATE

SOUTHERN · QUEEN · FIREPLACE · GRATES · AND · FURNISHINGS



No. 141 — 15 inches high
Open Back



No. 126 — 21 inches high
Open Back



No. 143 — 15 inches high
Open Back



No. 128 — 18 inches high
Open Back



No. 138 — 18 inches high



No. 132 — 17 inches high

SOUTHERN · QUEEN · FIREPLACE · GRATES · AND · FURNISHINGS



No. 127 — 18 inches high
Open Back



No. 140 — 19 inches high
Open Back



No. 145 — 14½ inches high



No. 144 — 15 inches high
Open Back



No. 125 — 15½ inches high
Open Back



No. 129 — 18½ inches high
Open Back

CAST IRON ANDIRONS

SOUTHERN · QUEEN · FIREPLACE · GRATES · AND · FURNISHINGS



No. 148 — 17 inches high



No. 131 — 21 inches high
5½-inch Ball



No. 130 — 18 inches high
Open Back



No. 114 — 19½ inches high



No. 136 — 18 inches high



No. 134 — 18 inches high

SOUTHERN · QUEEN · FIREPLACE · GRATES · AND · FURNISHINGS



No. 146 — 18 inches high
Open Back



No. 115 — 24 inches high
3 3/4-inch Ball



No. 149 — 17 inches high
5-inch Ball



No. 107 — 24 inches high



No. 137 — 22 inches high
3-inch Ball



No. 121 — 25 inches high
3 3/4-inch Ball

CAST IRON ANDIRONS

SOUTHERN · QUEEN · FIREPLACE · GRATES · AND · FURNISHINGS



No. 142 — 19 inches high
Open Back



No. 124 — 13 inches high



No. 133 — 18 inches high
Open Back



No. 135 — 19 inches high



No. 103 — 12½ inches high



No. 147 — 15 inches high
Open Back

SOUTHERN · QUEEN · FIREPLACE · GRATES · AND · FURNISHINGS



No. 51 — 14 inches high
Open Back



No. 52 — 14 inches high
Open Back



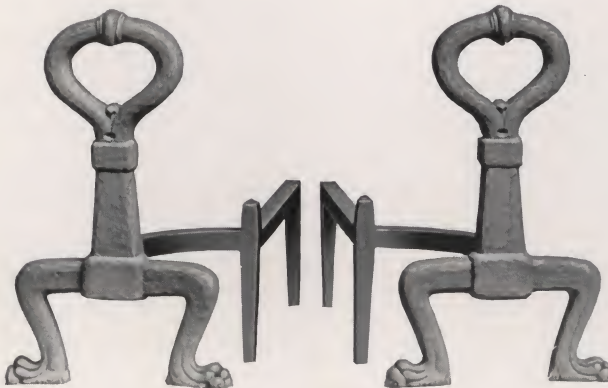
No. 53 — 14 inches high
Open Back



No. 54 — 14 inches high
Open Back



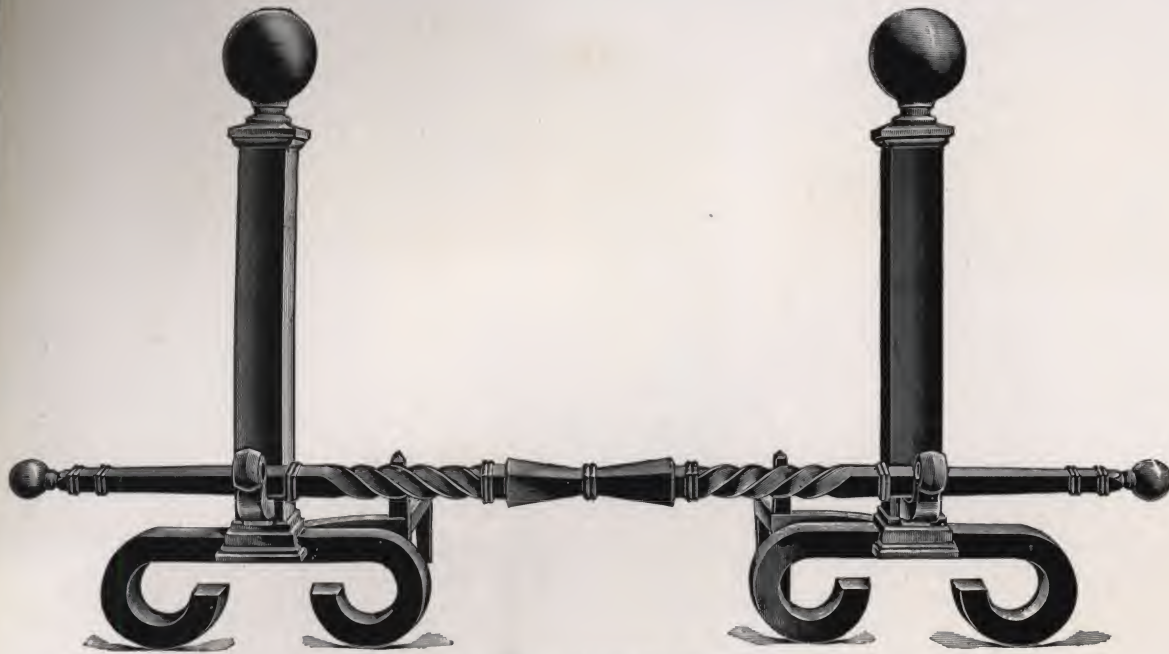
No. 61 — 14 inches high
Open Back



No. 62 — 14 inches high
Open Back



SOUTHERN · QUEEN · FIREPLACE · GRATES · AND · FURNISHINGS



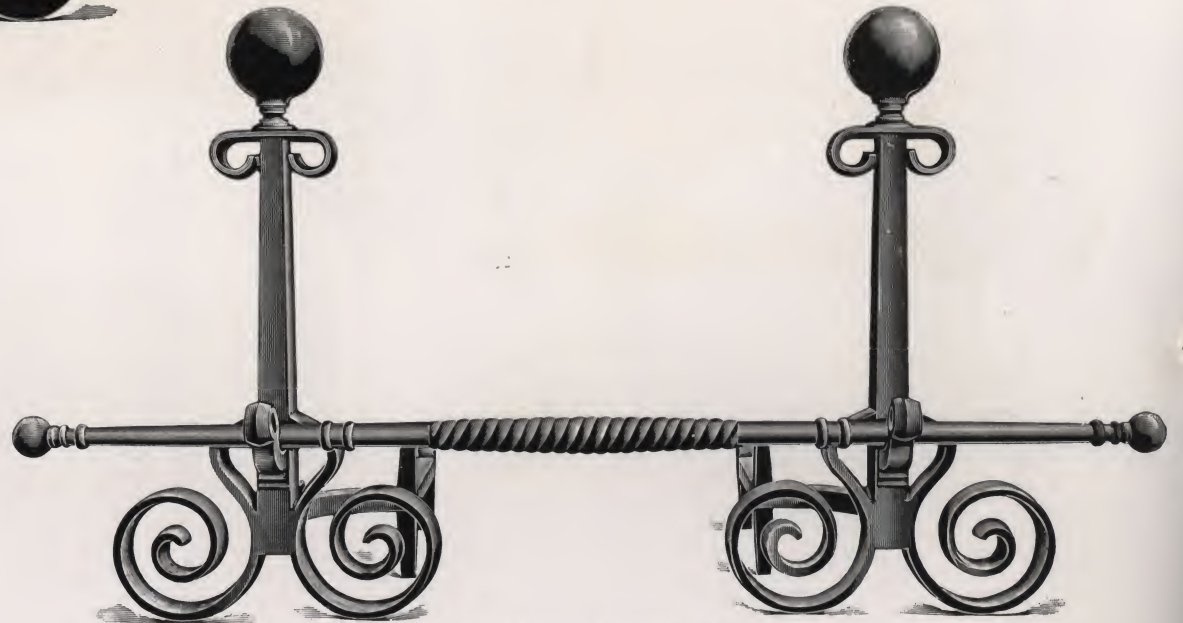
No. 452 — 25 inches high



No. 72 — 18 inches high
Open Back



No. 71 — 18 inches high
Open Back



No. 453 — 24 inches high

SOUTHERN · QUEEN · FIREPLACE · GRATES · AND · FURNISHINGS



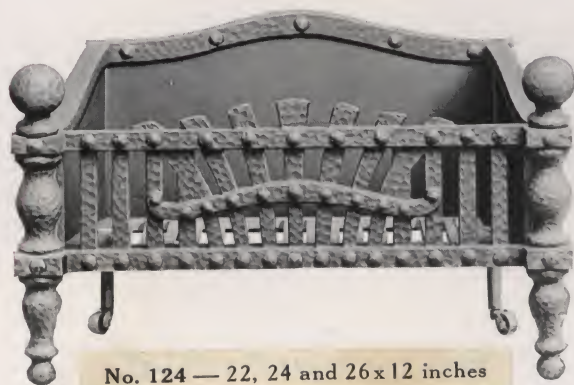
No. 55 — 18, 20, 22 and 24 x 10 inches



No. 65 — 18, 20, 22 and 24 x 10 inches



No. 165 — 18, 20, 22 and 24 x 10 inches



No. 124 — 22, 24 and 26 x 12 inches



No. 101 — 20, 22 and 24 x 12 inches



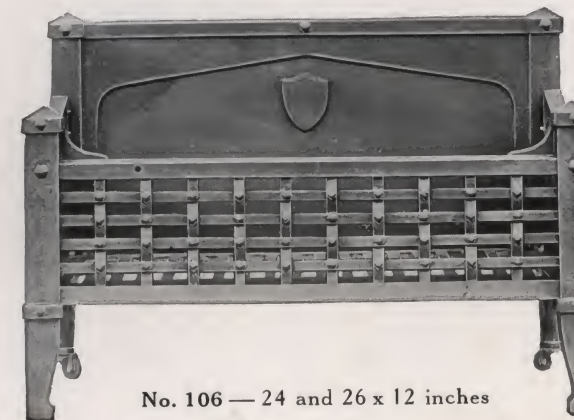
No. 103 — 24 and 26 x 12 inches



No. 104 — 20, 22 and 24 x 12 inches



No. 105 — 20 and 24 x 12 inches



No. 106 — 24 and 26 x 12 inches

PORTABLE BASKETS

SOUTHERN · QUEEN · FIREPLACE · GRATES · AND · FURNISHINGS



No. 107 — 22, 24, 26, 30 and 36 x 12 inches



No. 108 — 20, 22 and 24 x 12 inches



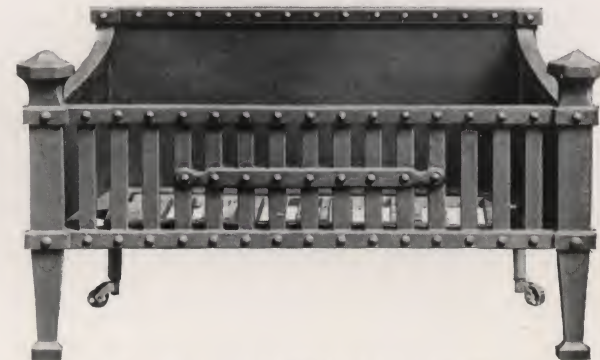
No. 109 — 20, 22 and 24 x 12 inches



No. 110 — 20, 22, 24 and 26 x 12 inches



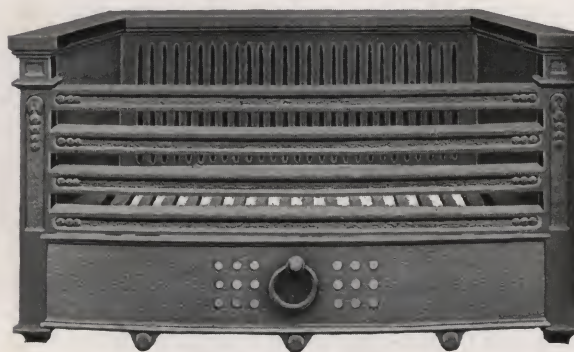
No. 111 — 22, 24, and 26 x 12 inches



No. 123 — 20, 22 and 24 x 12 inches



No. 113 — 22, 24 and 26 x 12 inches



No. 114 — With Crown, 24 x 12 inches



No. 114 — Without Crown, 24 x 12 inches

SOUTHERN · QUEEN · FIREPLACE · GRATES · AND · FURNISHINGS



No. 115 — 22, 24 and 26 x 12 inches



No. 116 — 22, 24 and 26 x 12 inches



No. 117 — 22, 24 and 26 x 12 inches



No. 118 — 26 and 30 x 12 inches



No. 119 — 24, 26 and 30 x 12 inches



No. 120 — 22 and 24 x 12 inches



No. 121 — 22 and 24 x 12 inches



No. 122 — 22 and 24 x 12 inches

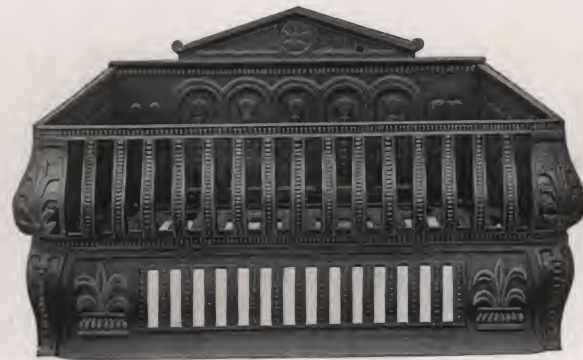


No. 125 — 20, 24 and 26 x 12 inches

22

PORTABLE BASKETS

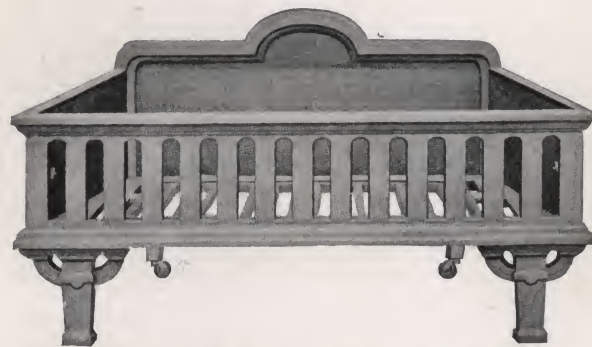
SOUTHERN · QUEEN · FIREPLACE · GRATES · AND · FURNISHINGS



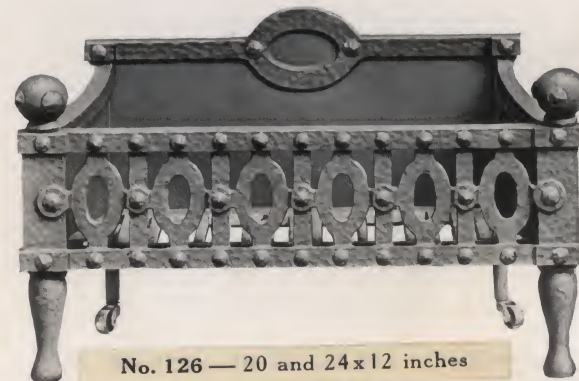
No. 100 — With Crown
18, 20, 22 and 24 x 12 inches



No. 100 — Without Crown
18, 20, 22 and 24 x 12 inches

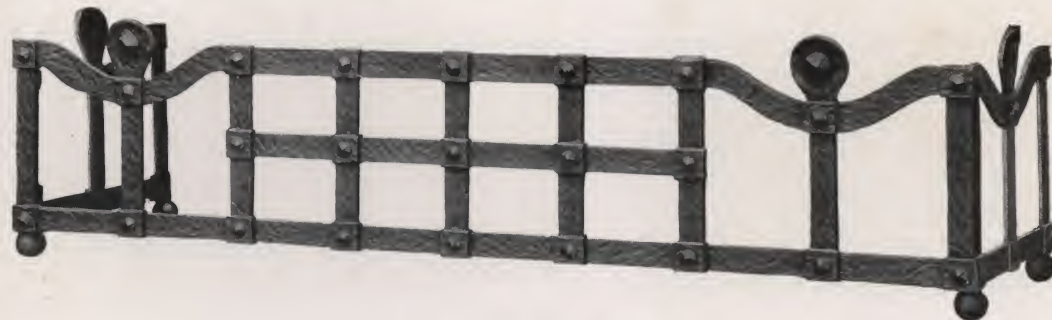


No. 112 — 20, 22, 24 and 26 x 12 inches

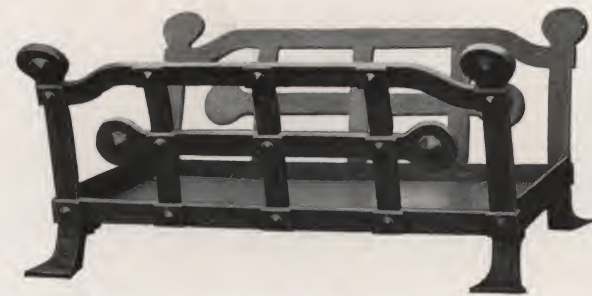


No. 126 — 20 and 24 x 12 inches

PORTABLE BASKETS



Fender No. 78
(Malleable Iron)
Length, 42 inches; Height, 9 inches; Width, 12 inches



Wood Basket No. 88
(Malleable Iron)
Length, 21 inches; Height, 9 inches
Width — bottom, 11 inches; top, 16 inches

ORNAMENTAL FENDER

ORNAMENTAL WOOD BASKET

SOUTHERN · QUEEN · FIREPLACE · GRATES · AND · FURNISHINGS



No. 115 — 22, 24 and 26 x 12 inches



No. 116 — 22, 24 and 26 x 12 inches



No. 117 — 22, 24 and 26 x 12 inches



No. 118 — 26 and 30 x 12 inches



No. 119 — 24, 26 and 30 x 12 inches



No. 120 — 22 and 24 x 12 inches



No. 121 — 22 and 24 x 12 inches



No. 122 — 22 and 24 x 12 inches



No. 125 — 20, 24 and 26 x 12 inches

22

PORTABLE BASKETS

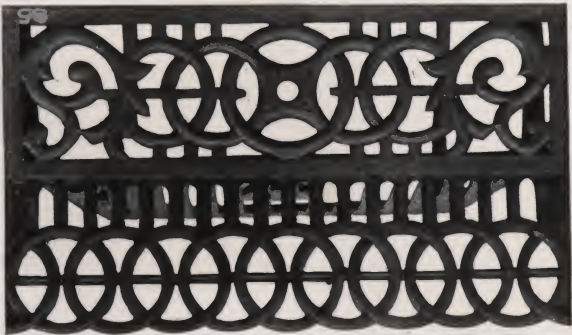
CLUB HOUSE GRATE BASKETS

(10 or 12 inches deep. Unless depth is specified, 10-inch will be shipped)

No. 94 — 20, 24 and 26 inches



No. 85 — 20 and 24 inches



No. 1 — 18 inches



No. 95 — 20 and 24 inches



No. 90 — 20 and 24 inches



No. 71 — 20, 24 and 26 inches



No. 91 — 20 and 24 inches



No. 75 — 20 and 24 inches



COMBINATION GRATES, FRAMES AND SUMMER FRONTS

IN THE following pages is shown the largest and most exclusive line of Combination Grates made by any factory, varying in designs from the most simple to the most elaborate.



A Combination Grate consists of Frame, Summer Front, Basket and Ash Screen or Crown. When a Grate has three-quarter Summer Front resting on the Crown, the Frame, Summer Front and Crown are plated and Basket black. When the Summer Front extends to the hearth, the Frame and Summer Front are plated, and Basket and Crown black.

All Ornamental Grates shown in this catalogue can be supplied in any style of Brass, Copper or Nickel finishes or black. All Combination Grates carry baskets 7 inches deep, unless otherwise specified, and with the exceptions of Nos. 416, 418 and 420, the Basket bottoms are corrugated.

All patterns of Combination Grates having full length Summer Fronts can be supplied as Frames and Summer Fronts only.

- Combination Grates 16 Tile with Full Cast Iron Summer Fronts, pages 21, 22 and 23.
- Combination Grates 17 Tile with Full Cast Iron Summer Fronts, pages 24, 25 and 26.
- Combination Grates 16 Tile with Three-Quarter Cast Iron Summer Fronts, pages 27, 28 and 29.
- Combination Grates 17 Tile with Three-Quarter Cast Iron Summer Fronts, pages 29, 30, 31 and 32.
- Combination Grates 16 Tile with Full Sheet Steel Summer Fronts, pages 33 and 34.
- Combination Grates 17 Tile with Full Sheet Steel Summer Fronts, page 35.
- Combination Grates 16 Tile with Three-Quarter Sheet Steel Summer Fronts, page 36.
- Combination Grates 17 Tile with Three-Quarter Sheet Steel Summer Fronts, page 36.
- Baskets for Combination Grates, page 37.



No. 135
24½ inches wide; 30¼ inches high; 18-inch Basket
Cast Iron Summer Front to Hearth



No. 260
24½ inches wide; 30¼ inches high; 20-inch Basket
Cast Iron Summer Front to Hearth



No. 261
24½ inches wide; 30¼ inches high; 20-inch Basket
Cast Iron Summer Front to Hearth



No. 660
24½ inches wide; 30¼ inches high; 20-inch Basket
Cast Iron Summer Front to Hearth
17-Tile size, No. 760, see page No. 24



Nos. 660 and 690 — Open view



No. 690
24½ inches wide; 30¼ inches high; 20-inch Basket
Cast Iron Summer Front to Hearth
17-Tile size, No. 790, see page No. 24

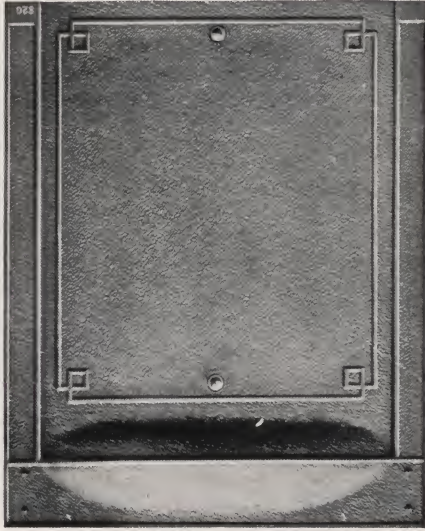
16-TILE COMBINATION GRATES WITH FULL CAST IRON FRONTS



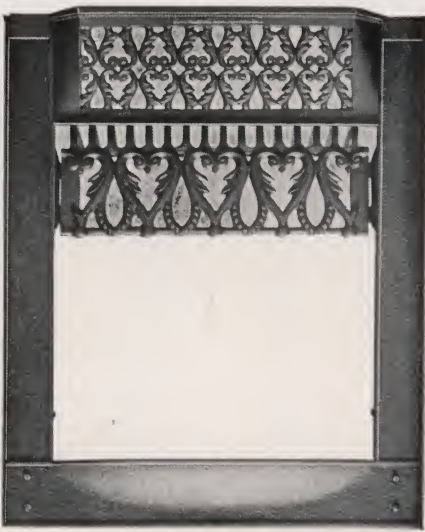
No. 560
Cast Iron Summer Front to Hearth
24½ inches wide; 30¼ inches high; 20-inch Basket



No. 1000
Cast Iron Summer Front to Hearth
24½ inches wide; 30¼ inches high; 20-inch Basket
17-Tile size, No. 1050, see page No. 25



No. 816
Cast Iron Summer Front to Hearth
24½ inches wide; 30¼ inches high; 16-inch Basket



No. 820
Cast Iron Summer Front to Hearth
24½ inches wide; 30¼ inches high; 18-inch Basket

24½ inches wide; 30¼ inches high; 20-inch Basket
Cast Iron Summer Front to Hearth
Made with Sheet Steel Summer Front, Nos. 916-918-920,
shown on page No. 33



No. 1435
Cast Iron Summer Front to Hearth
24½ inches wide; 30¼ inches high; 20-inch Basket



No. 1205
24½ inches wide; 30¼ inches high; 20-inch Basket
Cast Iron Summer Front to Hearth
17-Tile size, No. 1285, see page No. 25
Made with Sheet Steel Summer Front No. 1209
(Not illustrated)

16-TILE COMBINATION GRATES WITH FULL CAST IRON FRONTS

Nos. 816, 818 and 820 — Open view



No. 1440

24½ inches wide; 30¼ inches high; 20-inch Basket
Cast Iron Summer Front to Hearth
Made with Sheet Steel Summer Front, No. 1449,
shown on page No. 34



No. 1580

24½ inches wide; 30¼ inches high; 20-inch Basket
Cast Iron Summer Front to Hearth
17-Tile size, No. 1590, see page No. 26



No. 1500

24½ inches wide; 30¼ inches high; 20-inch Basket
Cast Iron Summer Front to Hearth



No. 1600

24½ inches wide; 30¼ inches high; 20-inch Basket
Cast Iron Summer Front to Hearth
17-Tile size, No. 1645, see page No. 26
Made with Sheet Steel Summer Front, No. 1609,
shown on page No. 34



No. 1550

24½ inches wide; 30¼ inches high; 20-inch Basket
Cast Iron Summer Front to Hearth
Made with Sheet Steel Summer Front, No. 1559,
shown on page No. 34



No. 1700

24½ inches wide; 30¼ inches high; 20-inch Basket
Cast Iron Summer Front to Hearth
17-Tile size, No. 1720, see page No. 26
Made with Sheet Steel Summer Front, No. 1709,
shown on page No. 34

16-TILE COMBINATION GRATES WITH FULL CAST IRON FRONTS



No. 187
30½ inches wide; 30¼ inches high; 26-inch Basket
Cast Iron Summer Front to Hearth
A Club House Basket is used with this Grate



No. 760
30½ inches wide; 30¼ inches high; 20-inch Basket
Cast Iron Summer Front to Hearth
16-Tile size, No. 660, see page No. 21



No. 340
30½ inches wide; 30¼ inches high; 20-inch Basket
Cast Iron Summer Front to Hearth
Made in 16-Tile size No. 540 (not illustrated)



Nos. 760 and 790 — Open view



No. 360
30½ inches wide; 30¼ inches high; 20-inch Basket
Cast Iron Summer Front to Hearth



No. 790
30½ inches wide; 30¼ inches high; 20-inch Basket
Cast Iron Summer Front to Hearth
16-Tile size, No. 690, see page No. 21

17-TILE COMBINATION GRATES WITH FULL CAST IRON FRONTS



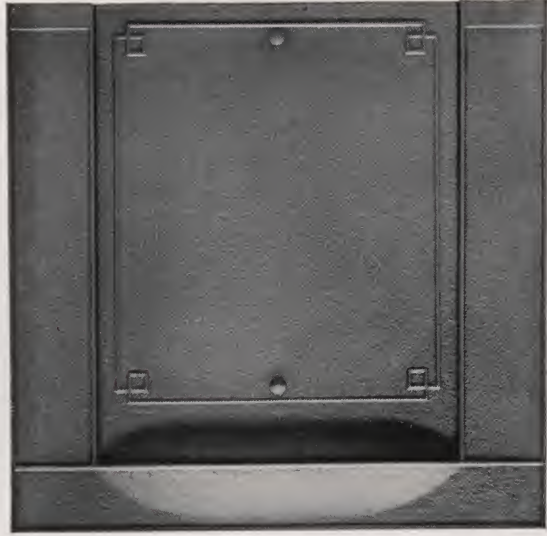
No. 770
30½ inches wide; 30¼ inches high; 20-inch Basket

Cast Iron Summer Front to Hearth
Made in 16 Tile size, No. 670 (not illustrated)



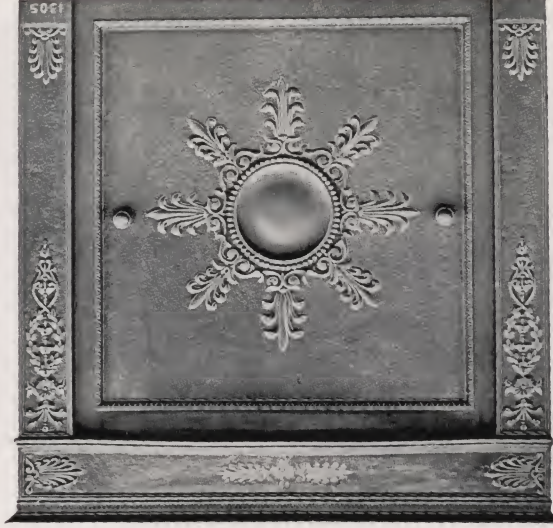
No. 1285
30½ inches wide; 30¼ inches high; 20-inch Basket

Cast Iron Summer Front to Hearth
16-Tile size, No. 1205, see page No. 22
Made with Sheet Steel Summer Front—16-Tile, No. 1209
17-Tile, No. 1289, shown on page No. 35



No. 840
30½ inches wide; 30¼ inches high; 20-inch Basket

Cast Iron Summer Front to Hearth
Made with Sheet Steel Summer Front, No. 940
shown on page No. 35



No. 1305
30½ inches wide; 30¼ inches high; 24-inch Basket

Cast Iron Summer Front to Hearth



No. 1050
30½ inches wide; 30¼ inches high; 24-inch Basket

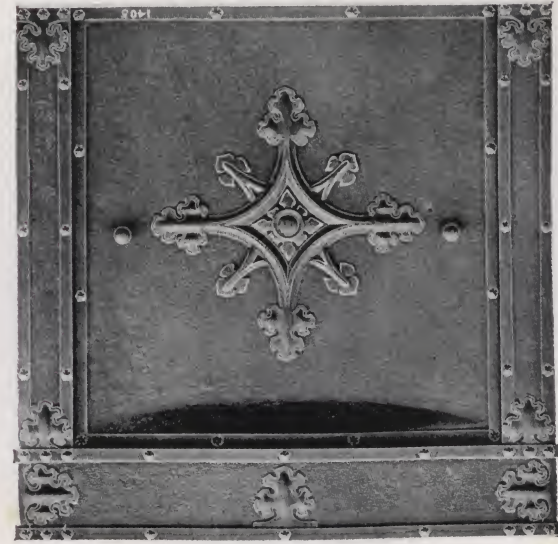
Cast Iron Summer Front to Hearth
16-Tile size, No. 1000, see page No. 22



No. 1360
30½ inches wide; 30¼ inches high; 24-inch Basket

Cast Iron Summer Front to Hearth

17-TILE COMBINATION GRATES WITH FULL CAST IRON FRONTS



No. 1405
30½ inches wide; 30¼ inches high; 24-inch Basket
Cast Iron Summer Front to Hearth



No. 1590
30½ inches wide; 30¼ inches high; 24-inch Basket
Cast Iron Summer Front to Hearth

16-Tile size, No. 1580, see page No. 28
Made with Sheet Steel Summer Front, No. 1599,
shown on page No. 35



No. 370
20 x 9 inches
For Complete Display of Baskets
See Page No. 37



No. 1645
30½ inches wide; 30¼ inches high; 20-inch Basket
Cast Iron Summer Front to Hearth

16-Tile size, No. 1600, see page No. 28
Made with Sheet Steel Summer Front, No. 1649,
shown on page No. 35

17-TILE COMBINATION GRATES WITH FULL CAST IRON FRONTS



No. 1534
30½ inches wide; 30¼ inches high; 24-inch Basket
Cast Iron Summer Front to Hearth



No. 1720
30½ inches wide; 30¼ inches high; 24-inch Basket
Cast Iron Summer Front to Hearth

16-Tile size, No. 1700, see page No. 23



No. 121
24½ inches wide; 30¼ inches high; 20-inch Basket
Cast Iron Summer Front to Crown
(This Grate has Stove Pipe Opening)
17-Tile size, No. 221, see page No. 30



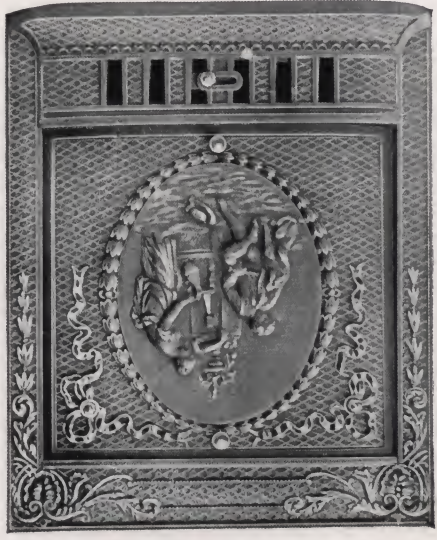
No. 123
24½ inches wide; 30¼ inches high; 20-inch Basket
Cast Iron Summer Front to Crown
17-Tile size, No. 223, see page No. 30

*Lead 1/2"
Full Bar
Facing*



No. 125
24½ inches wide; 30¼ inches high; 18 or 20-inch Basket
Cast Iron Summer Front to Crown
17-Tile size, No. 225, see page No. 30

*Lead 1/2"
Full Bar
Facing*



No. 126
24½ inches wide; 30¼ inches high; 20-inch Basket
Cast Iron Summer Front to Crown
17-Tile size, No. 226, see page No. 30



No. 127
24½ inches wide; 30¼ inches high; 20-inch Basket
Cast Iron Summer Front to Crown
17-Tile size, No. 227, see page No. 30



No. 580
24½ inches wide; 30¼ inches high; 20-inch Basket
Cast Iron Summer Front to Crown

16-TILE COMBINATION GRATES WITH THREE-QUARTER CAST IRON FRONTS

16-TILE COMBINATION GRATES WITH THREE-QUARTER CAST IRON FRONTS

No. 590
 24½ inches wide; 30¼ inches high; 20-inch Basket
 Cast Iron Summer Front to Crown
 Made with Sheet Steel Summer Front, No. 599,
 shown on page No. 36



No. 600
 24½ inches wide; 30¼ inches high; 20-inch Basket
 Cast Iron Summer Front to Crown
 17-Tile size, No. 700, see page No. 31



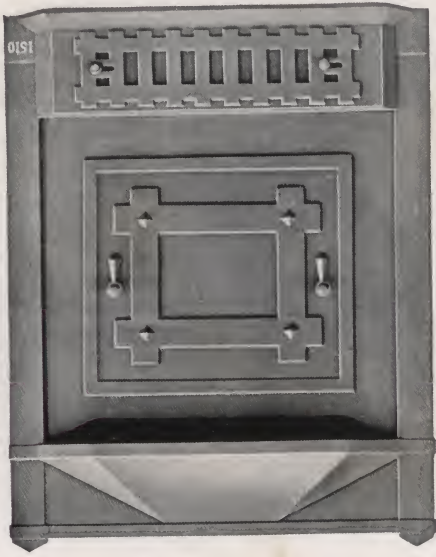
No. 828 — 18-inch Basket
 No. 825 — 20-inch Basket
 24½ inches wide; 30¼ inches high
 Cast Iron Summer Front to Crown
 17-Tile size, No. 845, see page No. 31
 Made with Sheet Steel Summer Front, Nos. 925-928,
 shown on page No. 36



Nos. 600 and 610 — Open view



No. 1510
 24½ inches wide; 30¼ inches high; 20-inch Basket
 Cast Iron Summer Front to Crown



No. 610
 24½ inches wide; 30¼ inches high; 20-inch Basket
 Cast Iron Summer Front to Crown
 17-Tile size, No. 710, see page No. 31



Handwritten notes:
 J M W 21
 988
 50 ft. 0 in.



No. 1525
Cast Iron Summer Front to Crown
24½ inches wide; 30¼ inches high; 20-inch Basket



No. 1625
Cast Iron Summer Front to Crown
24½ inches wide; 30¼ inches high; 20-inch Basket
17-Tile size No. 1635, see page No. 32



No. 1626
Cast Iron Summer Front to Crown
24½ inches wide; 30¼ inches high; 20-inch Basket
17-Tile size, No. 1636, see page No. 32



No. 380
Cast Iron Summer Front to Crown
30½ inches wide; 30¼ inches high; 20-inch Basket



Nos. 380 and 390 — Open view



No. 390
Cast Iron Summer Front to Crown
30½ inches wide; 30¼ inches high; 20-inch Basket
Made with Sheet Steel Summer Front, No. 399
shown on page No. 36

16-TILE COMBINATION GRATES WITH THREE-QUARTER CAST IRON FRONTS

17-TILE COMBINATION GRATES WITH THREE-QUARTER CAST IRON FRONTS



No. 221

30½ inches wide; 30¼ inches high; 20-inch Basket
 Cast Iron Summer Front to Crown
 (This Grate has Stove Pipe Opening)
 16-Tile size, No. 121, see page No. 27



No. 223

30½ inches wide; 30¼ inches high; 20-inch Basket
 Cast Iron Summer Front to Crown
 16-Tile size, No. 123, see page No. 27



No. 225

30½ inches wide; 30¼ inches high; 20-inch Basket
 Cast Iron Summer Front to Crown
 16-Tile size, No. 125, see page No. 27



No. 226

30½ inches wide; 30¼ inches high; 20-inch Basket
 Cast Iron Summer Front to Crown
 16-Tile size, No. 126, see page No. 27



Nos. 221 to 227 — Open view



No. 227

30½ inches wide; 30¼ inches high; 20-inch Basket
 Cast Iron Summer Front to Crown
 16-Tile size, No. 127, see page No. 27

17-TILE COMBINATION GRATES WITH THREE-QUARTER CAST IRON FRONTS



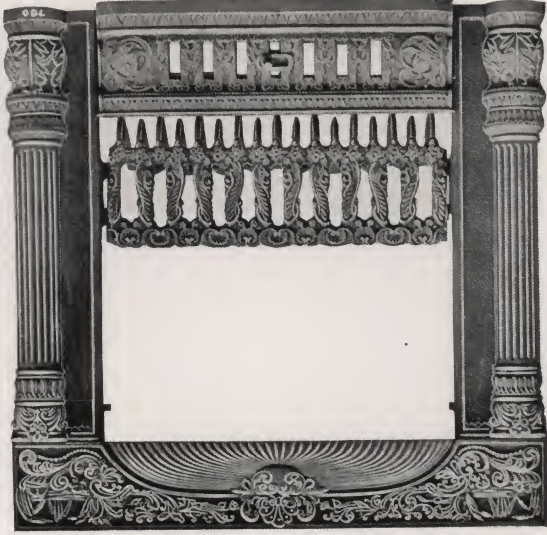
No. 524
 30½ inches wide; 30¼ inches high; 24-inch Basket
 Cast Iron Summer Front to Crown



No. 524 — Open view



No. 700
 30½ inches wide; 30¼ inches high; 20-inch Basket
 Cast Iron Summer Front to Crown
 16-Tile size, No. 600, see page No. 28



Nos. 700 and 710 — Open view



No. 845
 30½ inches wide; 30¼ inches high; 20-inch Basket
 Cast Iron Summer Front to Crown
 16-Tile size, Nos. 825-828, see page No. 28
 Made with Sheet Steel Summer Front, No. 945
 shown on page No. 35



No. 710
 30½ inches wide; 30¼ inches high; 20-inch Basket
 Cast Iron Summer Front to Crown
 16-Tile size, No. 610, see page No. 28

17-TILE COMBINATION GRATES WITH THREE-QUARTER CAST IRON FRONTS

17-TILE COMBINATION GRATES WITH THREE-QUARTER CAST IRON FRONTS

No. 1535
Cast Iron Summer Front to Crown
30 3/4 inches wide; 30 1/4 inches high; 24-inch Basket



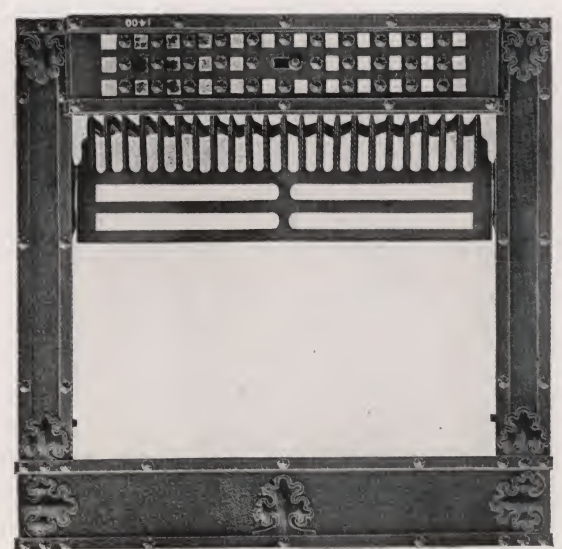
No. 1310
Half Cast Iron Summer Front to Crown
30 3/4 inches wide; 30 1/4 inches high; 24-inch Basket



No. 1635
Cast Iron Summer Front to Crown
30 3/4 inches wide; 30 1/4 inches high; 20-inch Basket



No. 1410 — Open view



No. 1636
Cast Iron Summer Front to Crown
30 3/4 inches wide; 30 1/4 inches high; 20-inch Basket



No. 1410
Half Cast Iron Summer Front to Crown
30 3/4 inches wide; 30 1/4 inches high; 24-inch Basket





No. 349
24½ inches wide: 30¼ inches high: 20-inch Basket
Sheet Steel Summer Front to Hearth



No. 529
24½ inches wide: 30¼ inches high: 20-inch Basket
Sheet Steel Summer Front to Hearth
This Grate has Stove Pipe Opening



Nos. 416-418-420 — Open view



No. 916
24½ inches wide: 30¼ inches high: 16-inch Basket
Sheet Steel Summer Front to Hearth

No. 918
24½ inches wide: 30¼ inches high: 18-inch Basket
Sheet Steel Summer Front to Hearth

No. 920
24½ inches wide: 30¼ inches high: 20-inch Basket
Sheet Steel Summer Front to Hearth
17-Tile size, No. 940, see page No. 35
Made with Cast Iron Summer Front, Nos. 816-818-820,
shown on page No. 22



No. 418
24½ inches wide: 30¼ inches high: 16-inch Basket
Sheet Steel Summer Front to Hearth

No. 420
24½ inches wide: 30¼ inches high: 18-inch Basket
Sheet Steel Summer Front to Hearth

No. 416
24½ inches wide: 30¼ inches high: 20-inch Basket
Sheet Steel Summer Front to Hearth



No. 829
24½ inches wide: 30¼ inches high: 20-inch Basket
Sheet Steel Summer Front to Hearth

16-TILE COMBINATION GRATES WITH FULL SHEET STEEL FRONTS

16-TILE COMBINATION GRATES WITH FULL SHEET STEEL FRONTS

No. 1559
24½ inches wide; 30¼ inches high; 20-inch Basket
Sheet Steel Summer Front to Hearth
Made with Cast Iron Summer Front, No. 1550,
shown on page No. 29



No. 1429
24½ inches wide; 30¼ inches high; 20-inch Basket
Sheet Steel Summer Front to Hearth



No. 1609
24½ inches wide; 30¼ inches high; 20-inch Basket
Sheet Steel Summer Front to Hearth
Made with Cast Iron Summer Front, No. 1600,
shown on page No. 23
17-Tile size, No. 1649, see page 35



No. 1439
24½ inches wide; 30¼ inches high; 20-inch Basket
Sheet Steel Summer Front to Hearth



No. 1709
24½ inches wide; 30¼ inches high; 20-inch Basket
Sheet Steel Summer Front to Hearth
Made with Cast Iron Summer Front, No. 1700,
shown on page No. 23



No. 1449
24½ inches wide; 30¼ inches high; 20-inch Basket
Sheet Steel Summer Front to Hearth
Made with Cast Iron Summer Front, No. 1440,
shown on page No. 23





No. 329

30½ inches wide; 30¼ inches high; 20-inch Basket Sheet Steel Summer Front to Hearth

(This Grate has Stove Pipe Opening)



No. 1599

30½ inches wide; 30¼ inches high; 24-inch Basket Sheet Steel Summer Front to Hearth

Made with Cast Iron Summer Front, No. 1590, shown on page No. 26



No. 940

30½ inches wide; 30¼ inches high; 20-inch Basket Sheet Steel Summer Front to Hearth

Made in 16-Tile size, Nos. 916-918-920, see page No. 33

Made with Cast Iron Summer Front, No. 840, shown on page No. 25



No. 1649

30½ inches wide; 30¼ inches high; 20-inch Basket Sheet Steel Summer Front to Hearth

Made with Cast Iron Summer Front, No. 1645, 16-Tile size, No. 1609, see page 34

shown on page No. 26



No. 1289

30½ inches wide; 30¼ inches high; 20-inch Basket Sheet Steel Summer Front to Hearth

Made in 16-Tile size, No. 1209 (not illustrated)

Made with Cast Iron Summer Front—16-Tile, No. 1205, page No. 22; 17-Tile, No. 1285, page No. 25



No. 945

30½ inches wide; 30¼ inches high; 20-inch Basket Sheet Steel Summer Front to Crown

Made with Cast Iron Summer Front No. 845, 16-Tile size, Nos. 928 and 925, see page No. 36

shown on page No. 31

17-TILE COMBINATION GRATES WITH FULL SHEET STEEL FRONTS



No. 129
Sheet Steel Summer Front to Crown
24½ inches wide; 30¼ inches high; 20-inch Basket



No. 599
Sheet Steel Summer Front to Crown
24½ inches wide; 30¼ inches high; 20-inch Basket
Made with Cast Iron Summer Front, No. 590,
shown on page No. 28



No. 928 — 18-inch Basket
No. 925 — 20-inch Basket
24½ inches wide; 30¼ inches high
Sheet Steel Summer Front to Crown
17-Tile size, No. 945, see page 35
Made with Cast Iron Summer Front, Nos. 825-828,
shown on page No. 28



No. 539
Sheet Steel Summer Front to Crown
30½ inches wide; 30¼ inches high; 24-inch Basket



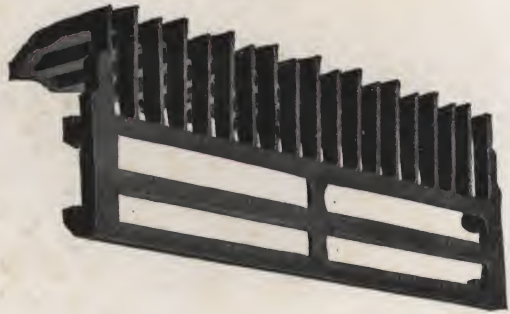
No. 229
Sheet Steel Summer Front to Crown
30½ inches wide; 30¼ inches high; 20-inch Basket



No. 399
30½ inches wide; 30¼ inches high; 20-inch Basket
Sheet Steel Summer Front to Crown
Made with Cast Iron Summer Front, No. 390,
shown on page No. 29

16-TILE COMBINATION GRATES WITH THREE-QUARTER SHEET STEEL FRONTS

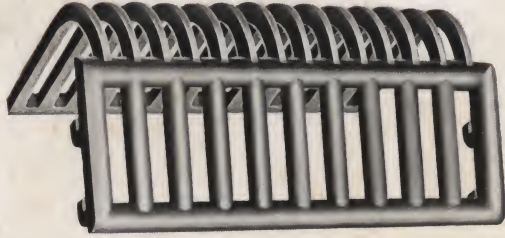
17-TILE COMBINATION GRATES WITH THREE-QUARTER SHEET STEEL FRONTS



No. 310
20 and 24 x 7 or 9 inches



No. 420
16, 18 and 20 x 5 or 7 1/2 inches



No. 800
16, 18 and 20 x 7 inches



No. 430
20 and 24 x 7 or 9 inches



ADJUSTABLE LUG BASKET

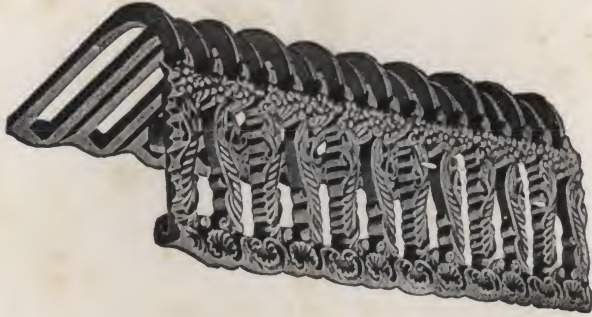
The lower Lugs are adjustable and will fit Grates with Lugs any distance apart. A long felt need for repairs.

Sizes 14, 15, 16, 17, 18, 19 and 20 inches
For prices on Adjustable Lug Baskets, see page No. 43

BASKETS USED WITH COMBINATION GRATES



No. 410
18 and 20 x 7 inches



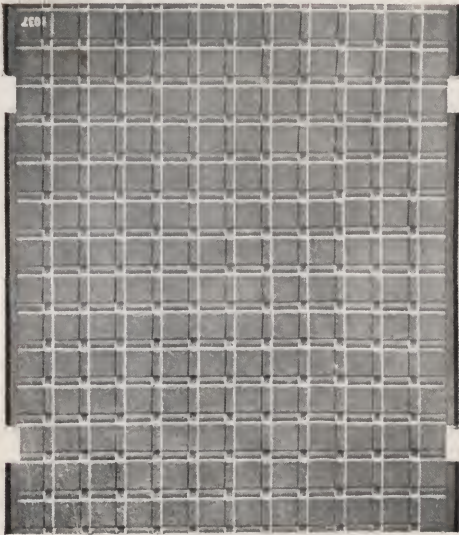
No. 510
20 and 24 x 7 inches



No. 370
20 x 9 inches

IRON FIREPLACE LININGS

No. 1037
Back 18, 20, 22 and 24 inches
Sides 12, 15 and 18 inches



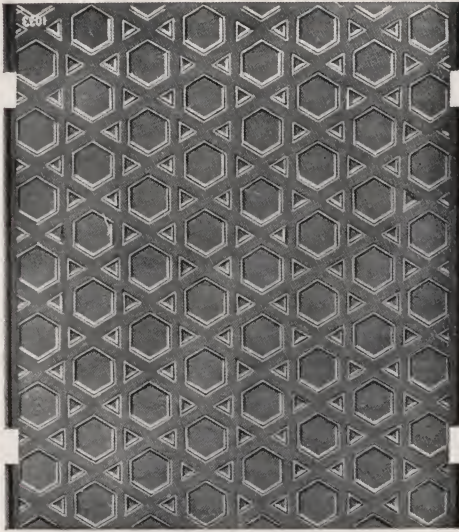
No. 1017
Back 20, 24, 30 and 36 inches
Sides 12, 15 and 18 inches



No. 1039
Back 20, 24 and 27 inches
Sides 12, 15 and 18 inches



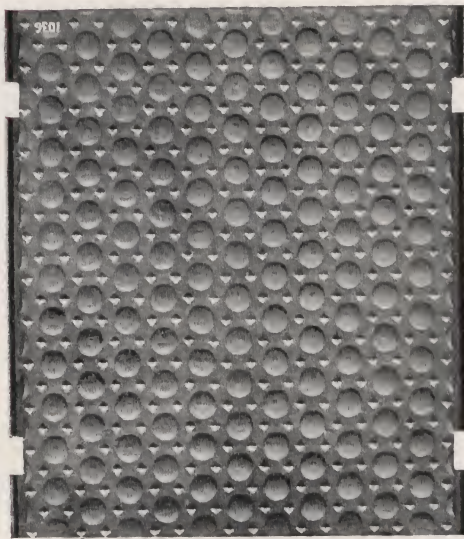
No. 1033
Back 20, 24, 27 and 30 inches
Sides 12, 15 and 18 inches



No. 1042
Back 24 and 27 inches
Sides 12, 15 and 18 inches



No. 1036
Back 20, 24, 27 and 30 inches
Sides 12, 15 and 18 inches



COMMON GRATES WITH FENDERS

Nos. 20 and 40

Includes Frame, Fender and Basket. Plain Iron or Varnished. Grate Basket has two hooks at each end, which holds it firmly in place.

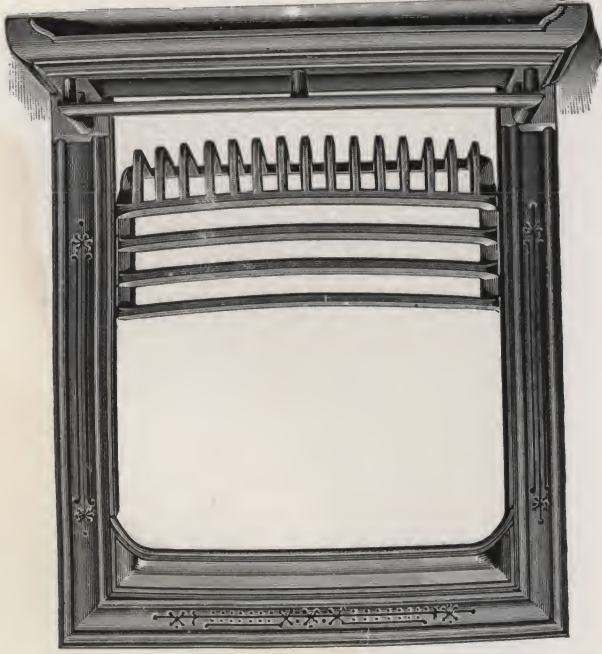
Straight or Circular Basket

Size of Basket	14 inches	28 inches	Width of Frame	20½ inches
	16 inches	28 inches		22½ inches
	18 inches	30¼ inches		24½ inches
	20 inches	30¼ inches		26½ inches

LIST PRICES

Plain Iron	\$3.25	Varnished	\$3.55
Plain Iron	3.75	Varnished	4.05
Plain Iron	4.50	Varnished	4.80
Plain Iron	5.50	Varnished	5.80
Plain Iron	6.50	Varnished	6.80
Plain Iron	8.50	Varnished	8.80

For List Price of Extras see page 41



No. 40 — Three-Piece Grate
Sizes 14, 16, 18, 20, 22 and 24 inches

COMMON GRATES WITH ASH SCREENS

Nos. 1220 and 1240

Includes Frame, Crown and Basket. Plain Iron or Varnished. Grate Basket has two hooks at each end, which hold it firmly in place.

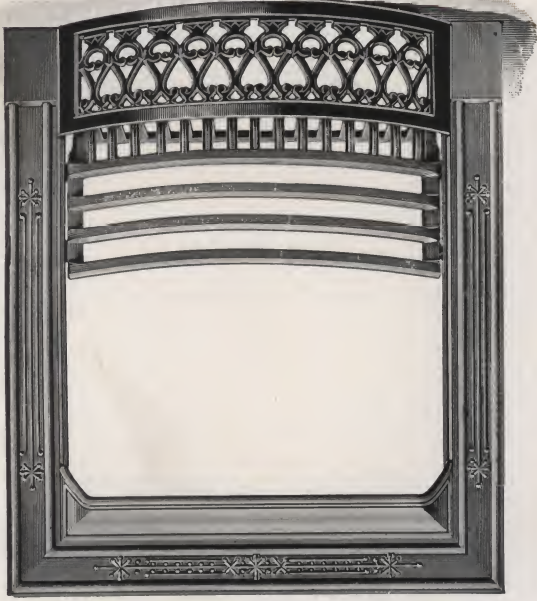
Circular Basket

Size of Basket	14 inches	28 inches	Height of Frame	20½ inches
	16 inches	28 inches		22½ inches
	18 inches	30¼ inches		24½ inches
	20 inches	30¼ inches		26½ inches

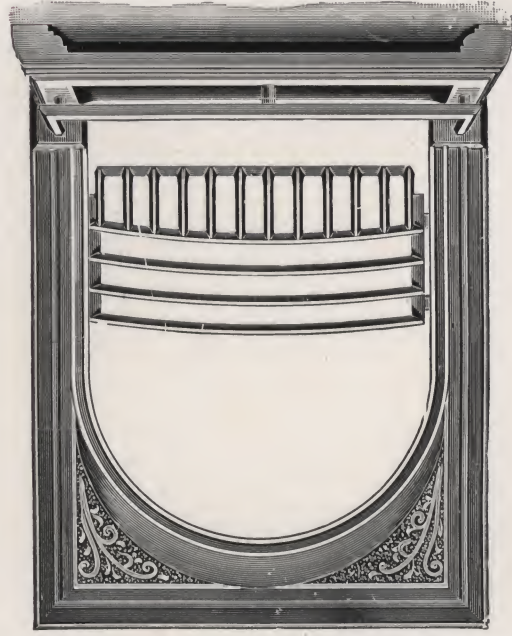
LIST PRICES

Plain Iron	\$3.00	Varnished	\$3.25
Plain Iron	3.50	Varnished	3.75
Plain Iron	4.00	Varnished	4.25
Plain Iron	5.00	Varnished	5.25

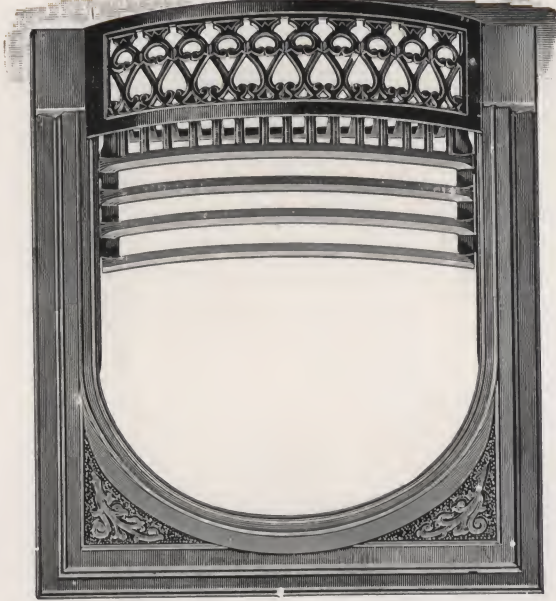
For List Price of Extras see page 41



No. 1240 — Three-Piece Grate
Sizes 14, 16, 18 and 20 inches



No. 20 — Three-Piece Grate
Sizes 14, 16, 18, 20, 22 and 24 inches



No. 1220 — Three-Piece Grate
Sizes 14, 16, 18 and 20 inches

COMMON GRATES

COMMON GRATES WITH FENDERS
AND SUMMER FRONTS

No. 10 — FOUR-PIECE GRATE

Includes Frame, Fender, Basket and Summer Front. Plain Iron or Varnished. Either straight or circular basket hanging in frame. Grate basket has two hooks at each end, which hold it firmly in place.

Size of Basket	Width of Frame	Height of Frame
16 inches	23 inches	29 inches
18 inches	25 inches	29½ inches
20 inches	27 inches	30 inches

For List Price of Extras see page 41

LIST PRICE FOUR-PIECE GRATES

Nos. 10 and 25

Includes Frame, Fender, Summer Front and Basket

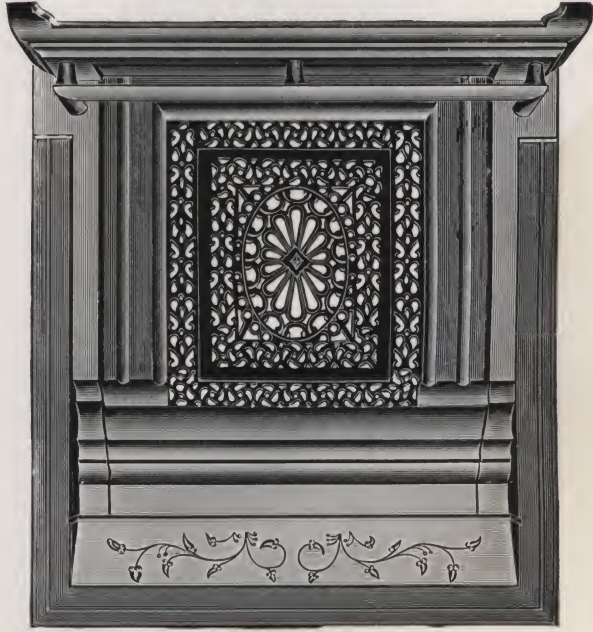
Size	Plain Iron	Varnished
12 inches	\$3.50	\$3.80
13 inches	3.75	4.05
14 inches	4.25	4.55
15 inches	4.50	4.80
16 inches	5.00	5.30
17 inches	5.50	5.80
18 inches	6.00	6.30
20 inches	7.25	7.55
22 inches	8.75	9.05
24 inches	11.50	11.80

No. 25 — FOUR-PIECE GRATE

Includes Frame, Fender, Basket and Summer Front. Plain Iron or Varnished. Either straight or circular basket hanging in frame. Grate basket has two hooks at each end, which hold it firmly in place.

Size of Basket	Width of Frame	Height of Frame
12 inches	19 inches	25 inches
13 inches	19½ inches	25 inches
14 inches	21 inches	26½ inches
15 inches	22 inches	26¾ inches
16 inches	23 inches	27¼ inches
17 inches	23½ inches	27¾ inches
18 inches	25 inches	28½ inches
20 inches	25½ inches	29½ inches
22 inches	30¼ inches	31 inches
24 inches	33 inches	31 inches

For List Price of Extras see page 41



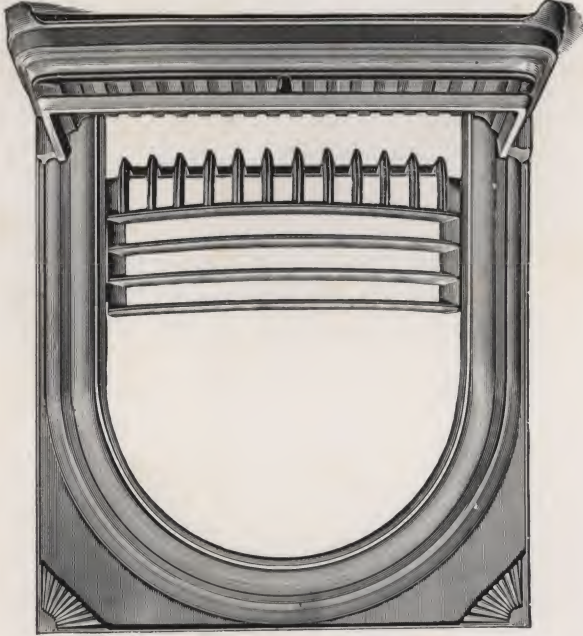
No. 10 — Four-Piece Grate
Sizes 16, 18 and 20 inches



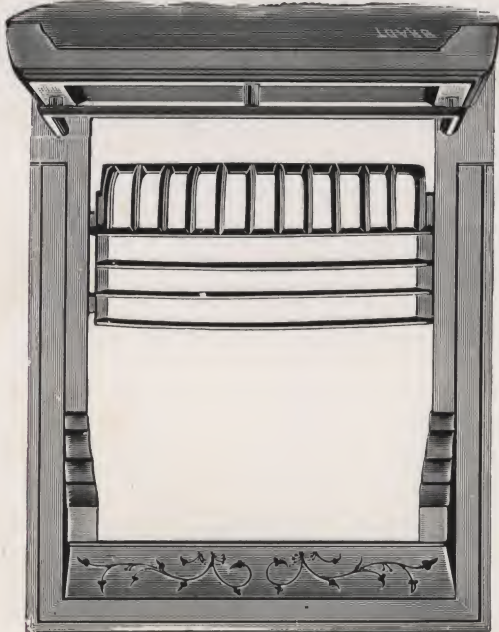
No. 25 — Four-Piece Grate
Sizes 12, 13, 14, 15, 16, 17, 18, 20, 22 and 24 inches
Page 40

COMMON GRATES

No. 25 — Three-Piece Grate
Sizes 12, 13, 14, 15, 16, 17, 18, 20, 22 and 24 inches



No. 10 — Three-Piece Grate
Sizes 16, 18 and 20 inches



LIST PRICE THREE-PIECE GRATES

Nos. 10 and 25

Includes Frame, Fender and Basket

Size	Plain Iron	Varnished
12 inches	\$2.75	\$3.05
13 inches	3.00	3.30
14 inches	3.25	3.55
15 inches	3.50	3.80
16 inches	3.75	4.05
17 inches	4.00	4.30
18 inches	4.50	4.80
20 inches	5.50	5.80
22 inches	6.50	6.80
24 inches	8.50	8.80

EXTRA GRATE FRAMES

Nos. 10, 20, 25, 40, 1220 and 1240

Size	Plain Iron	Varnished
12 inches	\$1.20	\$1.45
13 inches	1.30	1.55
14 inches	1.40	1.65
15 inches	1.55	1.80
16 inches	1.65	1.90
17 inches	1.95	2.20
18 inches	2.10	2.35
19 inches	2.35	2.60
20 inches	2.50	2.75
22 inches	3.00	3.25
24 inches	4.00	4.25

EXTRA GRATE FENDERS

Nos. 10, 20, 25, 40, 1220 and 1240

Size	Plain Iron	Varnished
12 inches	\$0.95	\$1.20
13 inches	1.05	1.30
14 inches	1.15	1.40
15 inches	1.25	1.50
16 inches	1.35	1.60
17 inches	1.45	1.70

LIST PRICE TWO-PIECE GRATES

Frames and Baskets

Nos. 10, 20, 25, 40, 1220 and 1240

Size	Plain Iron	Varnished
14 inches	\$2.30	\$2.50
15 inches	2.55	2.75
16 inches	2.75	2.95
17 inches	3.15	3.35
18 inches	3.35	3.55
19 inches	3.65	3.85
20 inches	3.90	4.10
22 inches	5.00	5.20
24 inches	6.30	6.50

EXTRA SUMMER FRONTS

Nos. 10, 20, 25, 40, 1220 and 1240

Size	Plain Iron	Varnished
18 inches	1.60	1.85
19 inches	1.75	2.00
20 inches	2.00	2.25
22 inches	2.25	2.50
24 inches	3.00	3.25

The lower Lugs are adjustable and will fit grate frame with Lugs any distance apart. A long felt need for repairs. Sizes 14, 15, 16, 17, 18, 19 and 20 inches.

ADJUSTABLE LUG BASKET

Size	Price	Size	Price
14 inches	\$1.30	18 inches	\$1.85
15 inches	1.45	19 inches	2.00
16 inches	1.60	20 inches	2.10
17 inches	1.75		

EXTRA PLAIN ASH GUARDS OR CROWNS

Nos. 10, 20, 25, 40, 1220 and 1240

Size	Plain Iron	Varnished
14 inches	\$0.75	\$1.00
16 inches	.85	1.10
18 inches	.95	1.20
20 inches	1.05	1.30

EXTRA GRATE BASKETS

Nos. 10, 20, 25, 40, 1220 and 1240

Size	Price	Size	Price
12 inches	\$0.95	17 inches	\$1.50
13 inches	1.05	18 inches	1.60
14 inches	1.15	19 inches	1.70
15 inches	1.25	20 inches	1.80
16 inches	1.40	22 inches	2.50

COMMON GRATES

GRATE JAMBS

Nos. 10, 20, 25, 40, 1220 and 1240

Price, per set, \$1.00

BLACK WROUGHT IRON FRAMES

No. 1137 — 1 1/2 inches



No. 1139 — 1 1/2 inches



No. 1141 — 1 1/2 inches



No. 1143 — 1 1/2 inches



No. 1145 — 1 1/2 inches



No. 1123 — 1 1/2 inches



No. 1125 — 2 inches



No. 1129 — 1 1/2 inches



No. 1131 — 2 inches



No. 1135 — 1 1/2 inches



No. 1105 — 1 1/2 inches



No. 1109 — 1 1/2 inches



No. 1117 — 2 inches

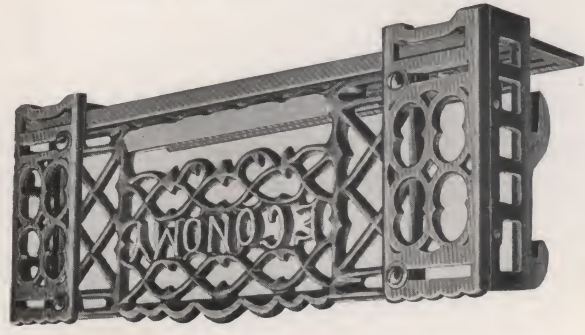


No. 1119 — 1 1/2 inches

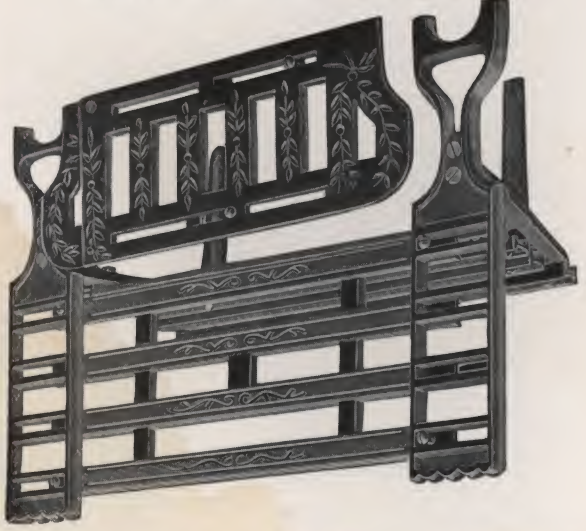


No. 1121 — 1 1/2 inches





ADJUSTABLE HANGING BASKET
 No. 3 can be adjusted to fit frames with openings any fraction of an inch from 14 to 17 inches.
 No. 4 can be adjusted to fit frames with openings any fraction of an inch from 17 to 20 inches.



ADJUSTABLE CLUB HOUSE BASKET
 No. 1 can be adjusted to fit frames with openings any fraction of an inch from 20 to 24 inches.
 No. 2 can be adjusted to fit frames with openings any fraction of an inch from 26 to 30 inches.



No. 60
 2-inch Face, 20-inch Opening



No. 70
 2-inch Face, 20-inch Opening



No. 80
 3-inch Face, 18-inch Opening
 3-inch Face, 24-inch Opening



No. 140
 2-inch Face, 20-inch Opening



No. 150
 2-inch Face, 20-inch Opening



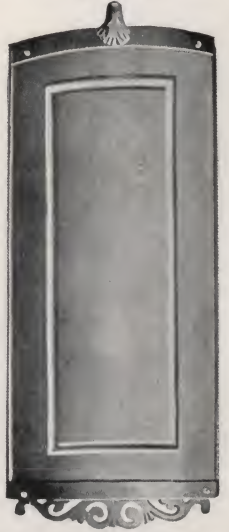
No. 100
 2-inch Face, 20-inch Opening

CAST IRON FRAMES, BLACK OR PLATED

Sizes of Cast Iron Frames Cannot be Changed

Practical and successful device for protecting mantel columns from the heat of the grate. They are circular shape, 11 inches wide and 26 inches high. Made of sheet steel with cast iron base and crown. They are given the same finish as grates with which they are used, being ornamental and serviceable.

MANTEL SHIELDS



No. 501



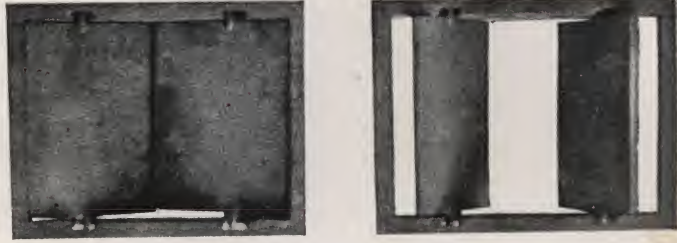
No. 505



ASH PIT DOOR
Frame 16 x 16; Opening 11½ x 11½



CHIMNEY DAMPER, WITH SLIDE
Sizes 20, 22, 24 and 26 inches

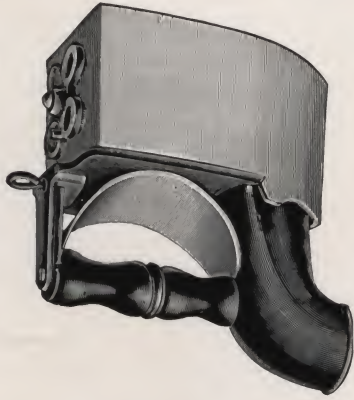


AUTOMATIC ASH TRAP
Size 7 x 9

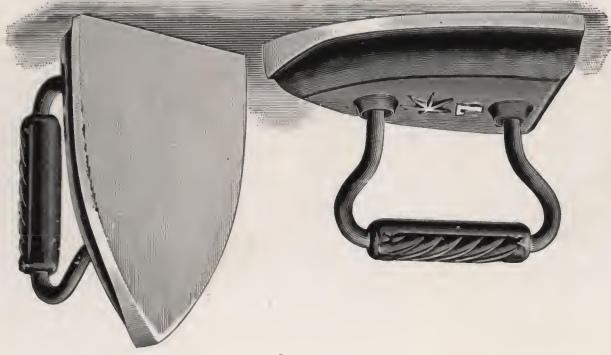
The weight of the ashes opens the lids, and as the ashes pass through into the pit the lids close automatically.



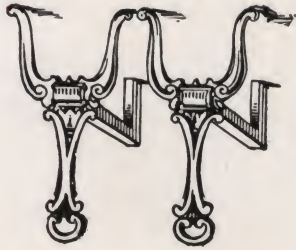
GAS LOG RESTS OR STANDS
10, 12, 14 and 16 inches long, 8 inches high



SELF-HEATING CHARCOAL IRONS
Made in two sizes—No. 2, No. 4, with either single or double draft.
No. 2—3½" long, 6½" high
No. 4—4½" long, 8" high
wide, 6½" wide, 6½" high
Finished Plain and Nickel Plated



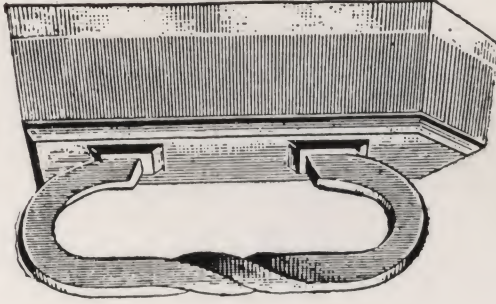
SAD IRONS
Sizes 4, 5, 6, 7 and 8 lbs.; finished in Black Japan



DOG IRONS
Size of No. 1, 10 in.; Weight, 18 lbs. per pair
Size of No. 2, 12 in.; Weight, 20 lbs. per pair



PRESSING IRONS
Sizes 10 to 24 lbs.; finished in Black Japan



TAILOR IRONS
Sizes 12 to 30 lbs.; finished in Black Japan

**LASTS AND STANDS
AND COBBLER SETS**



Royal (Cobbler No. 1)
FOR BOOT AND SHOE REPAIRING



ROYAL LAST
Height 7 inches
Finished in Black Japan



SAD IRON HEATER



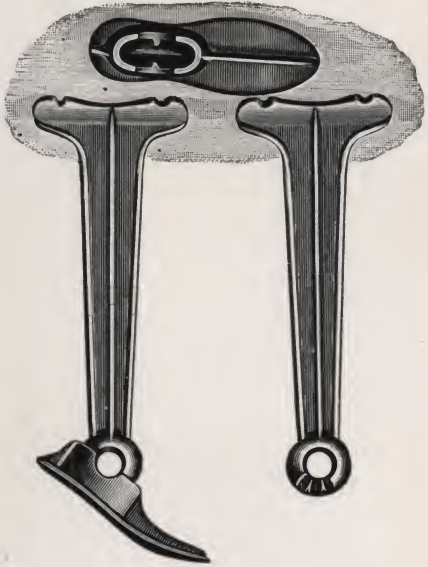
STAR (Cobbler No. 1)
FOR BOOT AND SHOE REPAIRING



LONE STAR
COBBLER SET



CESS POOL RING AND COVER



STAR LASTS AND STANDS
Height 15 inches
Finished in Black Japan



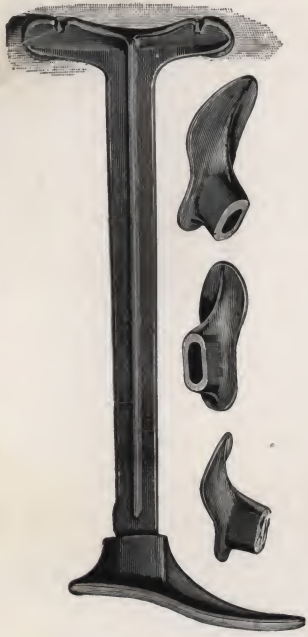
LAP LAST
Finished in Black Japan



CHATTA 3-WAY LAST
Height 7 1/2 inches
Finished in Black Japan



REGULAR LASTS AND STANDS
Height 15, 18 and 24 inches
Finished in Black Japan



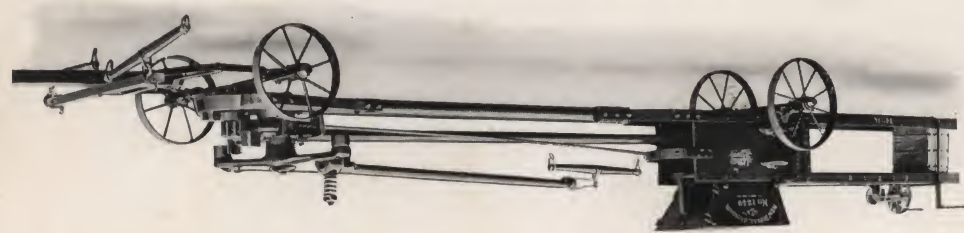
SHOEMAKERS' LASTS AND STANDS
Height 18 and 24 inches
Finished in Black Japan

BOOKLET SENT UPON REQUEST

ROYAL TWO-HORSE OPEN FEED STEEL HAY PRESS — 14" x 18" AND 16" x 18" SIZES



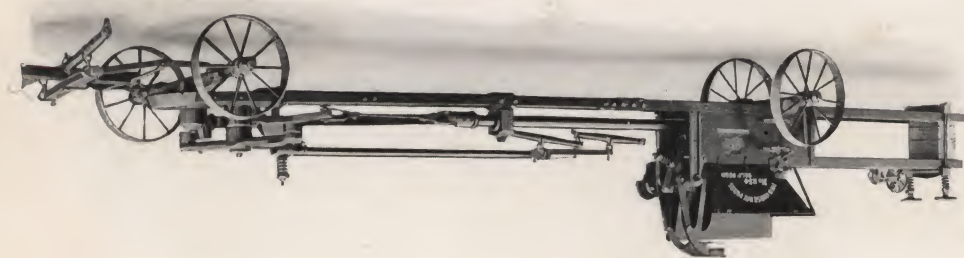
NEW ROYAL JUNIOR ONE-HORSE STEEL HAY PRESS — 14" x 18" SIZE ONLY



ECONOMY ONE-HORSE HAY PRESS — 14" x 18" SIZE ONLY



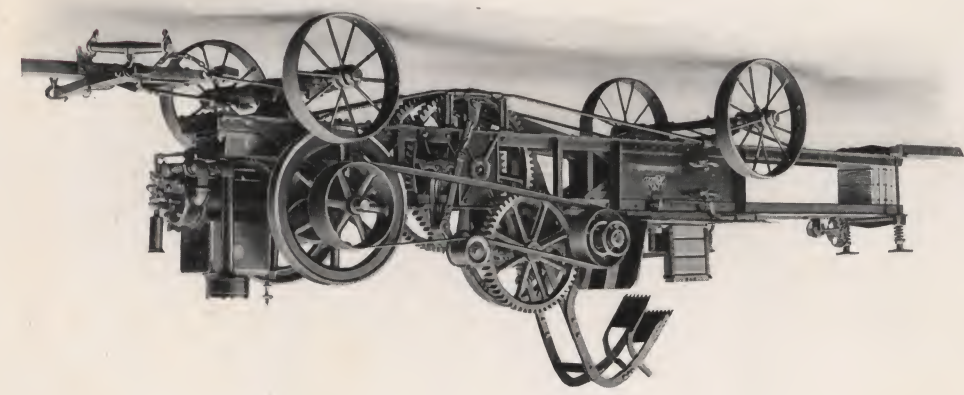
ROYAL TWO-HORSE SELF-FEED STEEL HAY PRESS — 14" x 18" AND 16" x 18" SIZES



CHAMPION POWER STEEL HAY PRESS — 14" x 18" SIZE ONLY



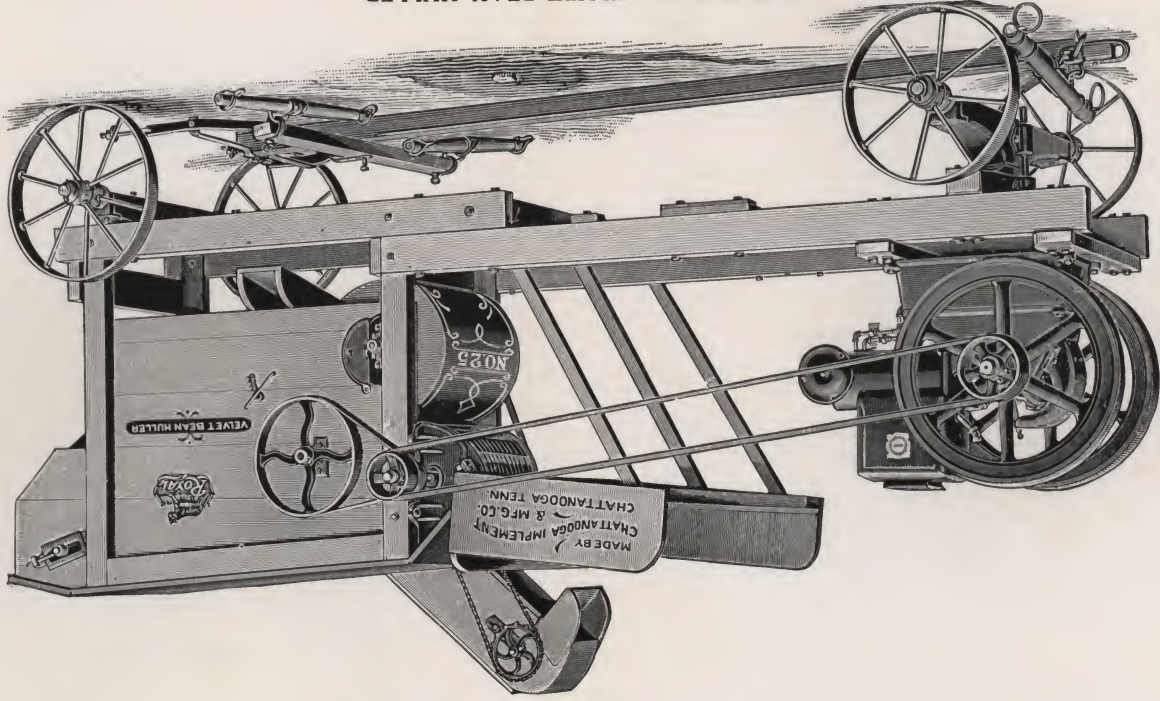
ROYAL POWER STEEL HAY PRESS — 14" x 18" AND 16" x 18" SIZES



ROYAL HAY PRESSES
THE EFFICIENCY LINE

ROYAL FARM MACHINERY

THE EFFICIENCY LINE



THE ROYAL VELVET BEAN HULLER

- No. 20— Unmounted Weight 900 Lbs.
 - No. 25— Mounted " 1250 "
 - No. 25— With 4-Horse Power Engine " 2250 "
- Capacity 25 to 30 bushels Velvet Beans per hour

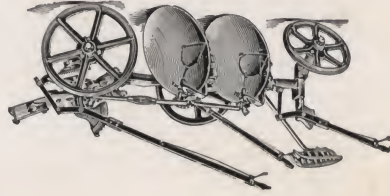
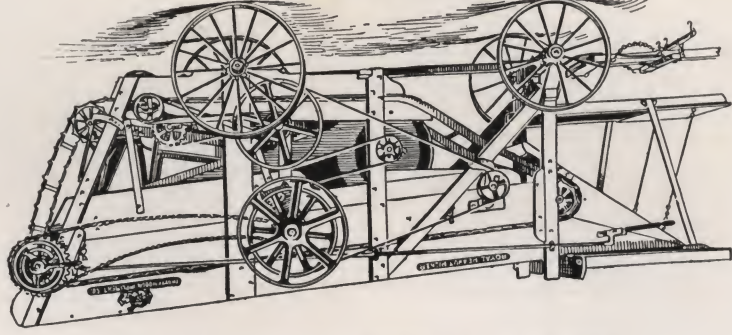


ROYAL PEA AND BEAN HULLERS

Seven different styles and sizes, five of them hand power, two of which can be converted to operate with an engine, and two styles of Velvet Bean Hullers.

WRITE FOR BOOKLET

ROYAL PEANUT PICKER



ROYAL DISC PLOWS

Made in two styles, the Reversible and the Straight Away. The Reversible made in two sizes, 20-inch and 24-inch discs. The Straight Away made in either Single or Double with 20-inch, 24-inch, 26-inch or 28-inch discs.



